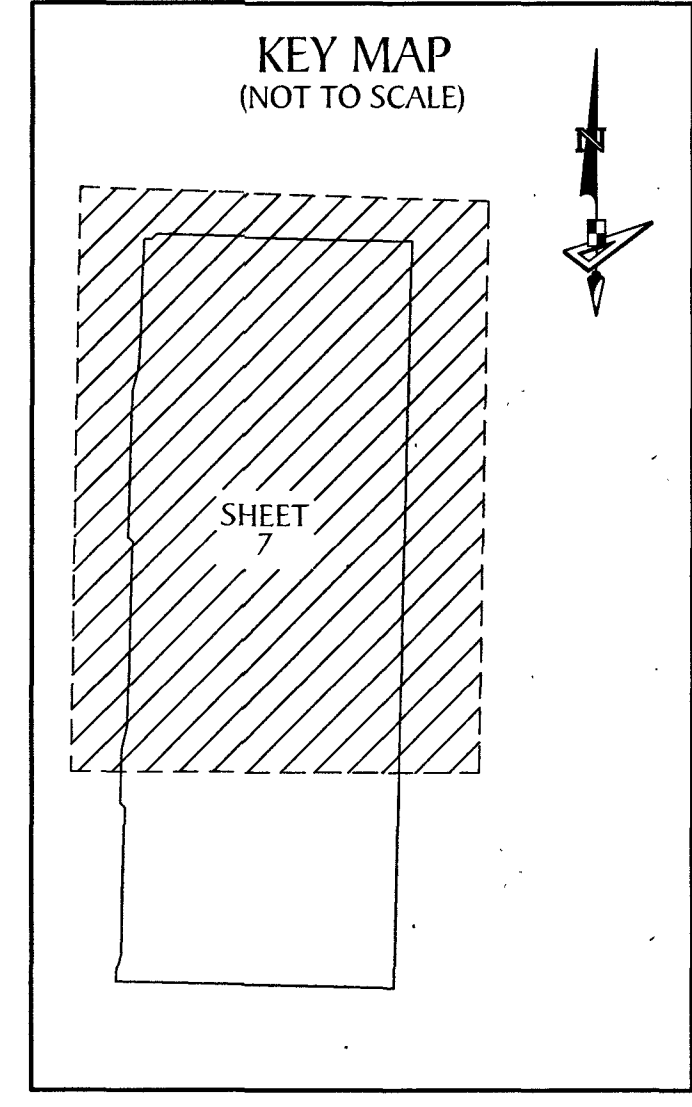
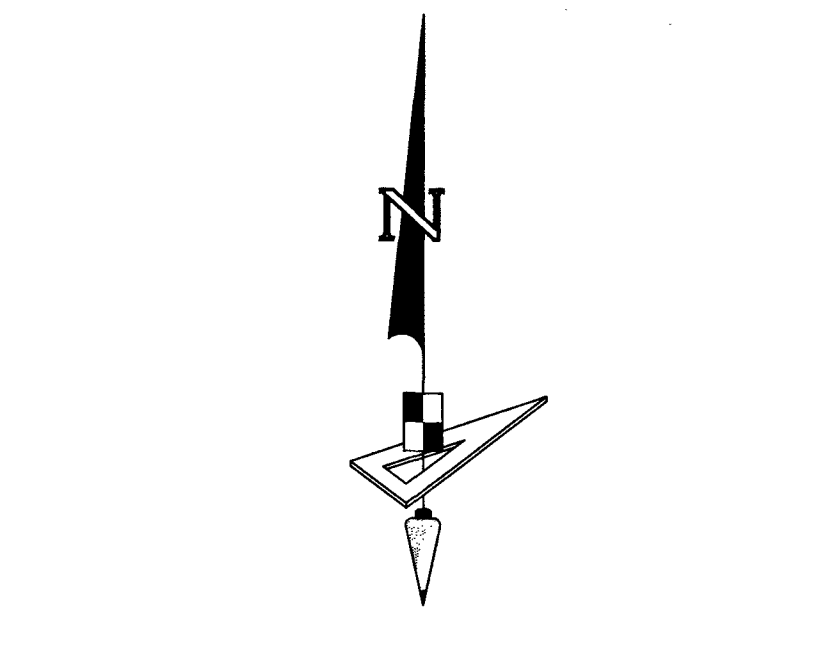
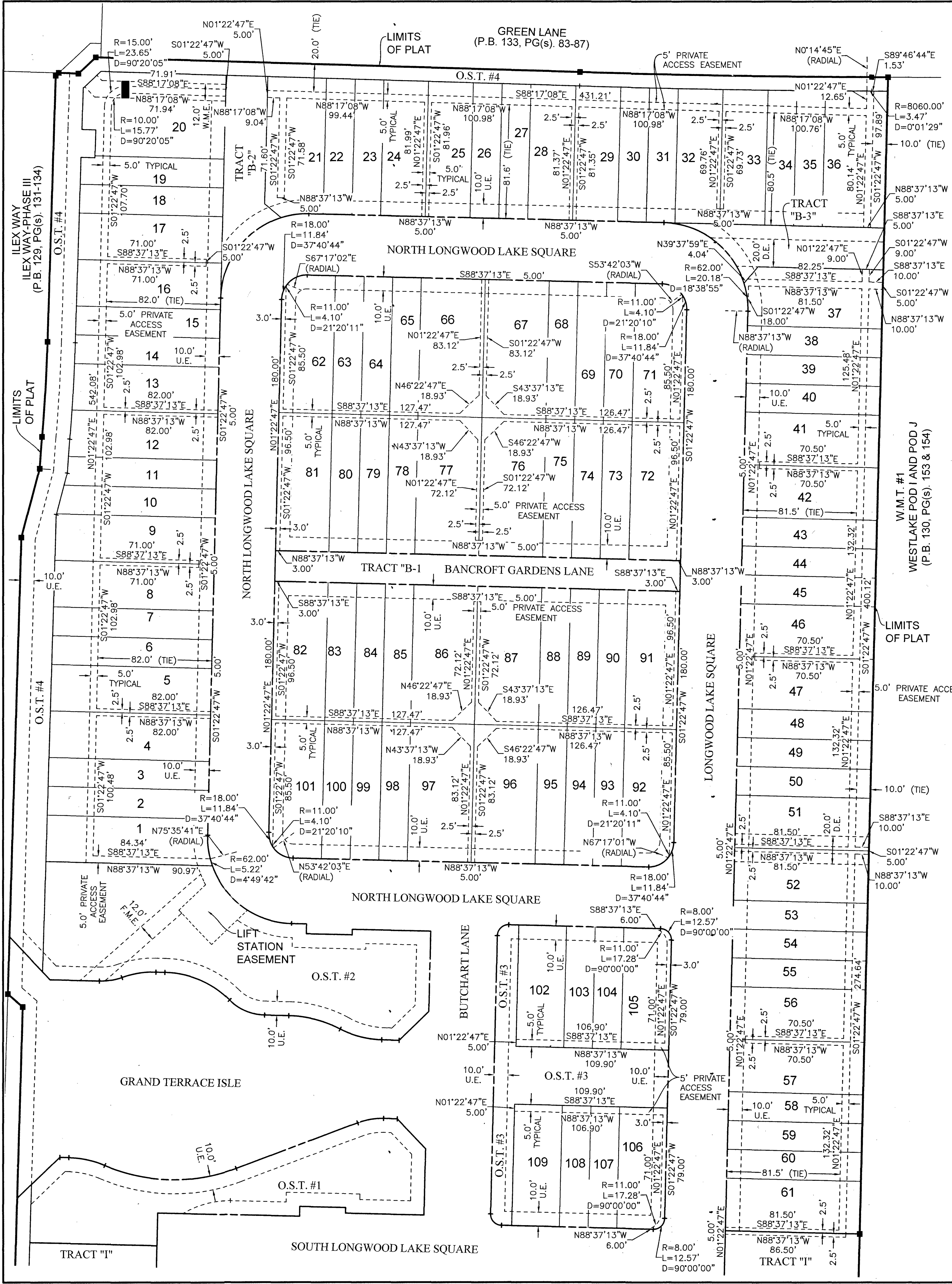


# TERRACES OF WESTLAKE - PHASE I

BEING A REPLAT OF A PORTION OF TRACT "A", WESTLAKE POD I AND POD J, PLAT BOOK 130, PAGES 153 AND 154, PUBLIC RECORDS OF PALM BEACH COUNTY, FLORIDA, LYING IN SECTION 12, TOWNSHIP 43 SOUTH, RANGE 40 EAST, CITY OF WESTLAKE, PALM BEACH COUNTY, FLORIDA.

149



**PRIVATE ACCESS EASEMENT  
DETAIL SHEET**

- LEGEND**
- P.O.B. ----- POINT OF BEGINNING
  - P.O.C. ----- POINT OF COMMENCEMENT
  - P.B. ----- PLAT BOOK
  - D.B. ----- DEED BOOK
  - R.P.B. ----- ROAD PLAT BOOK
  - O.R./O.R.B. ----- OFFICIAL RECORDS BOOK
  - PG./PG(S) ----- PAGE(S)
  - NAD ----- NORTH AMERICAN DATUM
  - W.M.T. ----- WATER MANAGEMENT TRACT
  - O.S.T. ----- OPEN SPACE TRACT
  - P.B.C. ----- PALM BEACH COUNTY
  - U.E. ----- UTILITY EASEMENT
  - D.E. ----- DRAINAGE EASEMENT
  - F.M.E. ----- FORCE MAIN EASEMENT
  - W.M.E. ----- WATER MAIN EASEMENT
  - 12-43-40 ----- SECTION-TOWNSHIP-RANGE
  - AC.±/AC± ----- ACRES
  - LB ----- LICENSED BUSINESS
  - R ----- RADIUS
  - L ----- ARC LENGTH
  - D ----- DELTA ANGLE
  - CB ----- CHORD BEARING
  - C ----- CHORD
  - Ⓢ ----- CENTER LINE OF ROAD
  - N.T. ----- NON-TANGENT
  - N.T.C. ----- NON-TANGENT CURVATURE
  - N.T.I. ----- NON-TANGENT INTERSECTION
  - P.C. ----- POINT OF CURVATURE
  - P.T. ----- POINT OF TANGENCY
  - R.C. ----- REVERSE CURVATURE
  - R/W ----- RIGHT-OF-WAY
  - H.O.A. ----- HOMEOWNERS ASSOCIATION
  - S.I.D. ----- SEMINOLE IMPROVEMENT DISTRICT
  - PRM ----- PERMANENT REFERENCE MONUMENT
  - ----- PERMANENT CONTROL POINT
  - ----- FOUND PERMANENT REFERENCE MONUMENT
  - ----- SET 4"x4" CONCRETE MONUMENT WITH 2" ALUMINUM DISK STAMPED "PRM LB 7768"